



Holyhead Marine

6.4m Fire & Rescue Craft

The 6.4m Fire & Rescue craft is a strong, reliable, highly manoeuvrable and versatile vessel for use in a number of challenging roles and environments. This vessel has been designed around the aluminium hull form of a 6.4m Workstar for the Royal Berkshire Fire Authority to provide a solid platform with a very shallow draught for operating in restricted waterways. It is ideal for use as a rescue launch, survey vessel, harbour maintenance launch & multi-purpose workboat.



The vessel is powered by a lightweight Steyr 164 Hp marine diesel engine coupled to a Hamilton 241 waterjet through a Hurth HSW 450 A gearbox giving an impressive power to weight ratio resulting in speeds in excess of 25 knots for a duration of up to 4 hours.

As a result of careful selection of equipment and its lightweight yet solid structure the vessel is light enough to be launched and recovered through the use of a trailer.

A large open foredeck provides sufficient workspace for a crew of 4 to work the vessel & stow equipment up to a combined weight of 1 tonne. In its role as a fire & rescue craft the vessel has sufficient deck area to recover and carry as many as 3 stretcher borne casualties whilst allowing the crew of 4 to cox and man the vessel effectively. Lockers in the bow and stern provide watertight stowage space which may be adapted to suit the requirements of any inventory of firefighting, rescue or other equipment.

At the transom, the vessel is fitted with a jet-guard doubling as a recovery platform from which a Jasons cradle may be deployed. The cut away transom area means that any casualties or equipment coming aboard may be moved quickly and efficiently inboard. A small towing post attached to the aft end of the engine box gives the vessel the ability to tow with a bollard pull in excess of 0.5 tonnes.



6.4m Fire & Rescue Craft

Principal Dimensions

Length (overall)	6.4 m
Length (incl jet bar)	7.2 m
Beam	2.5 m
Draught (light condition)	0.3 m
Displacement (Light)	1790 Kg
Displacement (Loaded)	2790 Kg

Propulsion

Main Engine	Steyr 164 163 BHP @ 4000 rpm
Gearbox	ZF Marine HSW 450A 1.56:1, Reduction ratio
Carden Shaft	Wagner UK
Waterjet	Hamilton Jet HJ 241
Steering Gear	Wagner UK HP100-001 701G Helm unit
Maximum Speed	25 knots @ 375 kg payload 12 knots @ 1 Tonne payload

Tankage

Fuel Capacity	165 litres
---------------	------------

Services

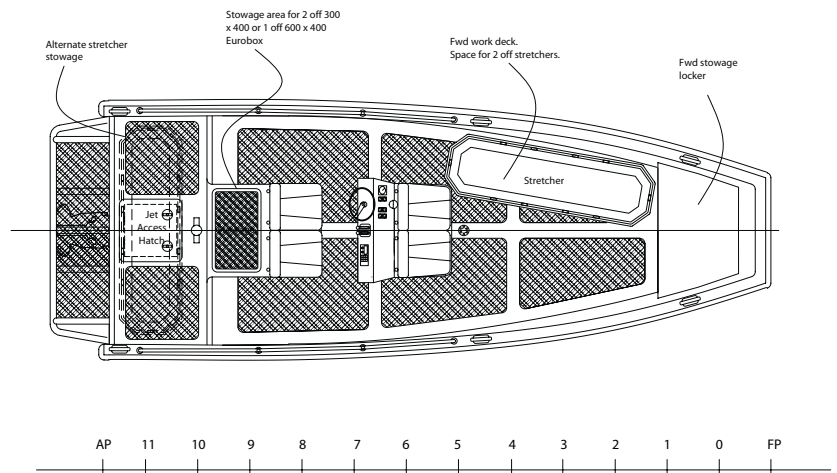
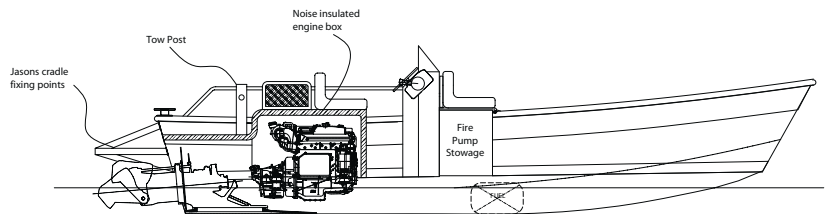
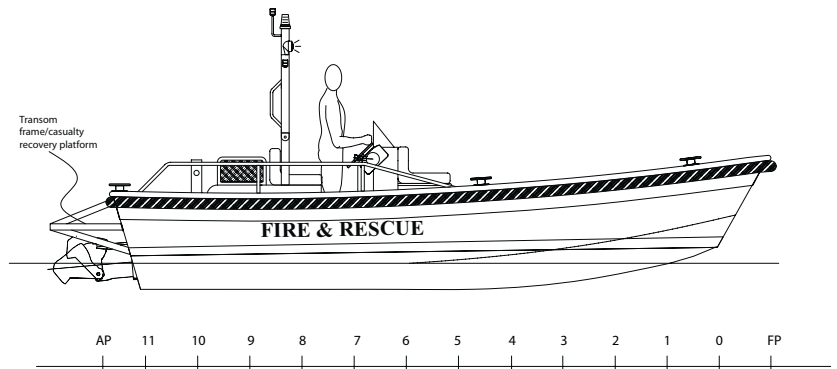
Bilge System:	
Manual Pump	Whale Gusher Urchin
Capacity	43 L/min
Electric Pump	Rule 500, 12v
Capacity	500 G/hr
Fire Suppression System	Pyrogen SP1 Fixed aerosol system
Electrical	2 off 12v Lucas 644 batteries

Navigational Aids & Communications

Navigation lights	Aqua Signal Series 25
Siren/PA	Whelen WPA system
Beacon	Premier Hazard Ltd Aeromax, 12v Twin Blue Strobe
Echosounder/Log	Raymarine Ltd Tridata ST 60

Deck Equipment

Fendering	High performance polyurethane covered elastomer foam
Fire fighting Pump	Rosenbauer 'Otter' lightweight fire pump 800 L/min @ 5 bar 4 off Lifting eyes
	Towing Post
	Transom platform
	6 off Deck Cleats



Holyhead Marine Services Limited

Newry Beach, Holyhead, Anglesey, LL65 1YB, Wales, UK

Tel: +44(0)1407 760111 Fax: +44(0)1407 764531

e-mail: marine.services@holyhead.co.uk

website: www.holyhead.co.uk

Registered in Wales 895484

