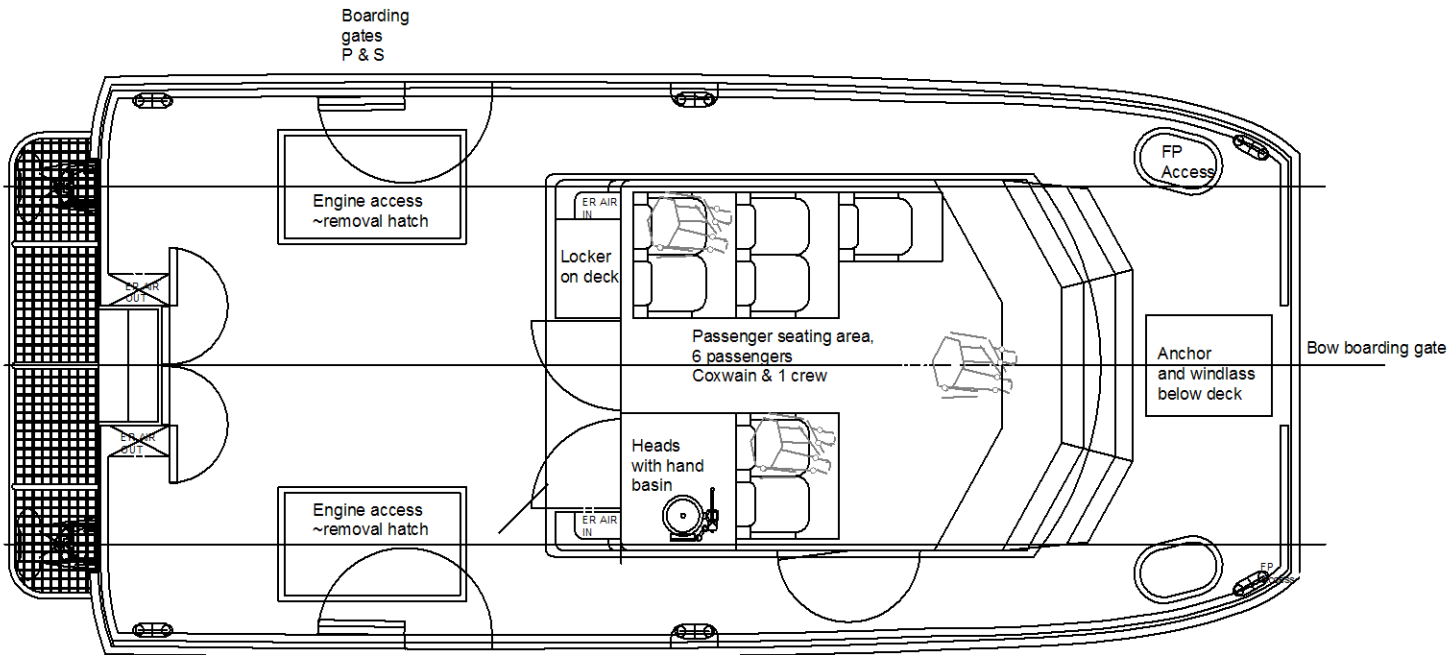
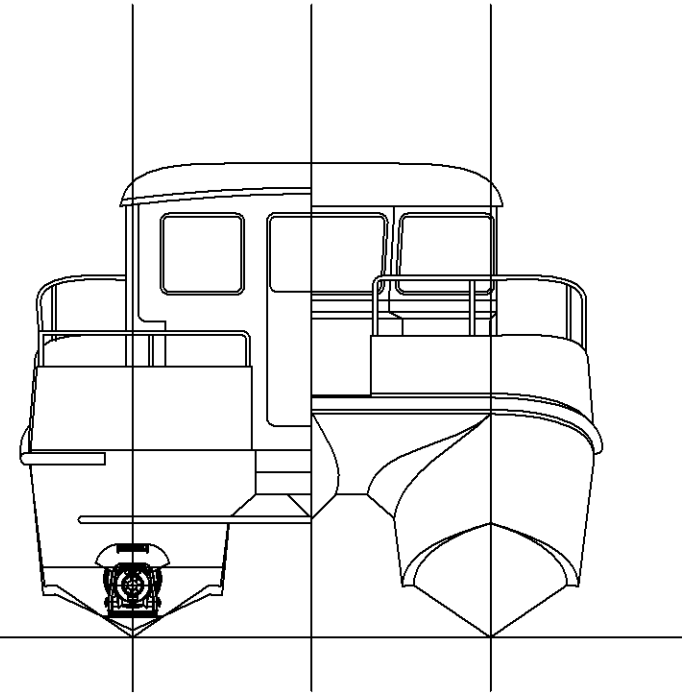
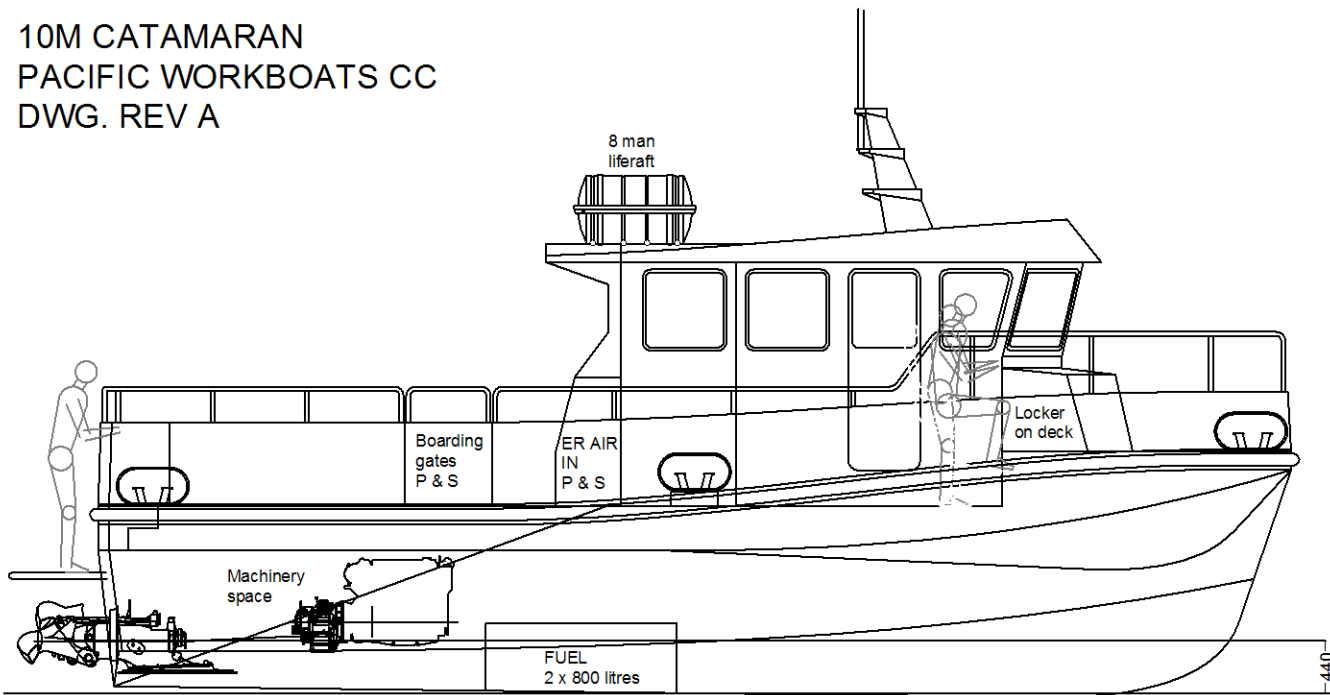


10M CATAMARAN  
 PACIFIC WORKBOATS CC  
 DWG. REV A



MAIN PARTICULARS:

Length overall 10.00m (excluding fenders and stern platform)  
 Beam moulded 4.75m (excluding fenders)  
 Depth moulded 1.57m (amidships)  
 Draft 0.44m

Fuel oil 1,600 litres (two tanks)  
 Fresh water TBA  
 Deck cargo 1,000 kg approx

Main Engines 2 x 350hp  
 Drive Hamilton 274 waterjets  
 Speed 30 knots  
 Range 300 miles

Classification UK Code of Practice Cat 2, 8 persons  
 Alternative classification available

